



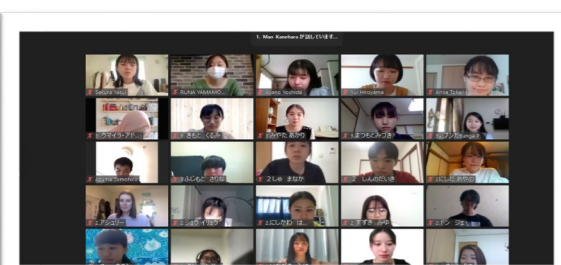
Intensive Japanese Language and Culture Study Program

Online!!
Jan. Feb. 2022

Let's study Japanese this winter!!!

The Center for Japanese Language Education at Kwansei Gakuin University (KGU) will launch an online version of the "Intensive Japanese Language and Culture Study Program" this winter. This is a three-week program, offering two different levels for Japanese language classes, elementary and intermediate. All sessions will be delivered in live stream interactive format and to maximize the opportunities for participants to communicate with native Japanese speakers, KGU school volunteers will participate as "Nihongo Partner" in classes and work together to accomplish tasks and projects.

The program will not only focus on language studies. In addition to the regular language classes, students will also be able to participate in Japanese Culture study

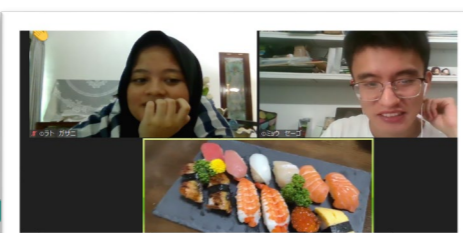


We are Nihongo Partners!!

We are not just here to support your Japanese studies.
We enjoy making new friends and learning about people from around the world. We look forward to meeting you all and building friendships with you through this

Online Home Visit!!

We provide virtual homestay experience through Online Home Visit session. You may become one of the members of a Japanese family and enjoy conversation and cultural exchange with them!



Program Information

Program Dates	Jan.31 - Feb. 18 2022
Number of Participant	Minimum: 6 students/class* *the minimum number of participants to run the program Maximum: 45 students/program
Teaching Method	Synchronous online Zoom classes
Class Hours and Credits	Class Hours 100 min. × 28 classes* = 45h (2 KGU credits) *12 Japanese + 11 Sessions + 5 Japanese Culture classes
Application Requirement	Students must be enrolled at one of KGU's partner institutions as an undergraduate or graduate student for the duration of the
Program Fee	30,000 JPY *Payment method: Credit card (Mastercard or Visa card only)

Class Level

	Prerequisite skills and requirements (self-taught is also acceptable)	Learning Outcomes
Elementary syllabus 1	<ul style="list-style-type: none">Completed more than 150 hours of Japanese language studies.Students are expected to have knowledge of basic verb conjugation, such as Dictionary form, Nai- form, and Te-form.Students should be at a level equivalent to "Minna no Nihongo" Lessons L13-50 or "Genki" Lessons L6-21.)Students should be able to output in simple sentences with some complex sentences, or in learning process of doing so.	<ul style="list-style-type: none">Students will be able to use elementary expressions, and become proficient in everyday conversation.Students will also be able to describe and express their thoughts on familiar day-to-day topics.
Intermediate syllabus 2	<ul style="list-style-type: none">Completed more than 400 hours of Japanese language studiesStudents are expected to have finished studying elementary level textbooks, and have moved onto intermediate level materials or more advanced level.N4 or higher level as a requirement	<ul style="list-style-type: none">Students will be able to discuss abstract concepts, and present and express their opinions.Students will also gain knowledge on other people's opinions and by doing so deepen their understanding of the subject.

*The final decision on class placement will be based on a language placement test which will take place before the program starts. Therefore, students may be placed to the different class level from the one they have originally chosen, depending on their results.

Japanese Culture Class

syllabus 3

Program Schedule

		Mon Jan 31	Tue Feb 1	Wed Feb 2	Thu Feb 3	Fri Feb 4	Sat Feb 5
WEEK 1	13:20-15:00	Orientation/ Placement Test (Japanese ①)	Japanese ②	Japanese Culture Class ①	Japanese ③	Japanese Culture Class ③	Japanese Culture Class ⑤
	15:10-16:50		Session with Nihongo Partner	Japanese Culture Class ②	Session with Nihongo Partner	Japanese Culture Class ④	-
WEEK 2		Feb 7	Feb 8	Feb 9	Feb 10	Feb 11	Feb 12
	13:20-15:00	Japanese ④	Japanese ⑤	-	Japanese ⑥	Japanese ⑦	-
WEEK 3	15:10-16:50	Session with Nihongo Partner	Session with Nihongo Partner	Japanese Culture Sharing	Session with Nihongo Partner	Session with Nihongo Partner	-
		Feb 14	Feb 15	Feb 16	Feb 17	Feb 18	-
WEEK 3	13:20-15:00	Japanese ⑧	Japanese ⑨	Japanese ⑩	Japanese ⑪	Japanese ⑫	-
	15:10-16:50	Session with Nihongo Partner	Session with Nihongo Partner	Session with Nihongo Partner	Session with Nihongo Partner	Session with Nihongo Partner/ Completion Ceremony	-

* Schedule is subject to change.

Nomination, Application, Transcripts

Applications can be completed online, and are available from one month prior to the deadline. However, you must apply through the study abroad office at your home university. Once we receive your information from your university, further information regarding application procedures will be provided along with the application form URL. Please be sure to complete your application by the deadline. Transcripts for the students who have successfully completed the program are expected to be sent out in mid-August. The transcripts will be sent to the study abroad office at their home institution.

Nomination Deadline	November 16
Application Deadline	November 30
Transcripts issued	Mid-March

Kwansei Gakuin University

Intensive Japanese Language and Culture Study Program –Elementary–
(3 Weeks)

◆プログラム目的

日本語の力を伸ばすとともに、日本の社会・文化への理解を深める。

Program Objective: Improve Japanese language proficiency while simultaneously increasing the level of understanding of Japanese society and culture.

◆到達目標

- ・ 初中級レベルの表現を使って、日常会話ができるようになる。
- ・ 身の回りのことについて、事実や感想をまとまった長さで表現できるようになる。

Learning Outcomes

- ・ Students will be able to use elementary expressions, and become proficient in everyday conversation.
- ・ Students will also be able to describe and express their thoughts on familiar day-to-day topics.

◆レベル

- ・ 日本語を 150 時間以上学習している
- ・ 動詞の基本活用（辞書形、て形、ない形）のルールがわかり、たどたどしいが産出できる
- ・ 学習中のレベルとしては『みんなの日本語』L13-50、『げんき L6-21』である
- ・ 産出のイメージとしては、単文から複文へと発展途上の段階である
- ・ N5 合格レベルである

Level of study

- ・ Completed more than 150 hours of Japanese language studies.
- ・ Students are expected to have knowledge of basic verb conjugation, such as Dictionary form, Nai- form, and Te- form.
- ・ Students should be at a level equivalent to “Minna no Nihongo” Lessons L13-50 or “Genki” Lessons L6-21.)
- ・ Students should be able to output in simple sentences with some complex sentences, or in the learning process of doing so.
- ・ N5 level or equivalent as a requirement.

◆授業内容

授業は、zoom を使って 同時 双方向型^{どうじ そうほうこうがた}で行います。日常生活や社会、文化に関するトピックを話したり、関連する資料を読んだりしながら、語彙や表現を学ぶと同時に、日本語の運用力を鍛^{きた}えます。また「日本語パートナー」との交流授業では、学んだ表現を実際に使うことで日本語での総合的なコミュニケーション能力を高め、スモールグループでタスクやプロジェクトに取り組むことで批判的^{ひはんてき}思考力^{しこうりき}や協働性^{きょうどうせい}を高めます。

Outline

Classes will be held through synchronous online Zoom classes. Students will improve and expand their vocabulary and expressions/phrases through discussions and reading materials on specific topics. Students will develop communication skills further by communicating in Japanese during classes with their Nihongo Partners. By working in small groups for

assigned tasks and projects, they will build up the skill to think critically, and to collaborate with others.

◆教材

ハンドアウトを配布する。

Course Materials

No required textbooks. Instructors will prepare handouts and materials.

◆成績 (Grading Criteria)

・パフォーマンス課題 (Performance Task) 50%

・知識^{ちしき}確認^{かくにん}テスト (Test) 20%

・参加度^{さんかど} (Participation) 30%

*これらは^{へんこう}変更になる場合があります。その時はお知らせします。

*60%以上で「合格」ですが、出席が 80%未満の場合は、自動的に「F」になります。

*The above is subject to change with prior notice.

*A passing grade is 60% or above. However, students who do not maintain a minimum of 80% class attendance will receive an F.

*If the above requirements are met, credits will be awarded.

Kwansei Gakuin University

Intensive Japanese Language and Culture Study Program –Intermediate–
(3 Weeks)

◆プログラム目的

日本語の力を伸ばすとともに、日本の社会・文化への理解を深める。

Program Objective: Improve Japanese language proficiency while simultaneously increasing the level of understanding of Japanese society and culture.

◆到達目標

- ・抽象的なテーマについて話し合い、関連する内容について発表したり意見を述べたりできるようになる。
- ・他者の考えを知り、理解を深めることができるようになる。

Learning Outcome

- ・Students will be able to discuss abstract concepts, and present and express their opinions.
- ・Students will also gain knowledge on other people's opinions and by doing so deepen their understanding of the subject.

◆レベル

- ・日本語を 400 時間以上学習している
- ・初級の教科書をひと通り終え、中級教科書を使って学習しているか、それ以上である
- ・N4 以上合格のレベルである

Level of study

- ・Completed more than 400 hours of Japanese language studies.
- ・Students are expected to have finished studying elementary level textbooks, and have moved onto intermediate level materials or more advanced level.
- ・N4 or higher level as a requirement.

◆授業内容

授業は、zoom を使って ^{どうじそうほうこうがた}同時双方向型で行います。日常生活や社会、文化に関するトピックを話したり、関連する資料を読んだりしながら、語彙や表現を学ぶと同時に、日本語の運用力を ^{きた}鍛えます。また「日本語パートナー」との交流授業では、学んだ表現を実際に使うことで日本語での総合的なコミュニケーション能力を高め、スモールグループでタスクやプロジェクトに取り組むことで ^{ひはんてきしこうりよく}批判的思考力や ^{きやうどうせい}協働性を高めます。

Outline

Classes will be held through synchronous online Zoom classes. Students will improve and expand their vocabulary and expressions/phrases through discussions and reading materials on specific topics. Students will develop communication skills further by communicating in Japanese during classes with their Nihongo Partners. By working in small groups for assigned tasks and projects, they will build up the skill to think critically, and to collaborate with others.

◆教材

ハンドアウトを配布する。

Course Materials

No required textbooks. Instructors will prepare handouts and materials.

◆成績 (Grading Criteria)

- ・ パフォーマンス課題 (Performance Task) 50%
- ・ 知識^{ちしき}確認^{かくにん}テスト (Test) 20%
- ・ 参加度^{さんかど} (Participation) 30%

*これらは^{へんこう}変更になる場合があります。その時はお知らせします。

*60%以上で「合格」ですが、出席が 80%未満の場合は、自動的に「F」になります。

*The above is subject to change with prior notice.

*A passing grade is 60% or above. However, students who do not maintain a minimum of 80% class attendance will receive an F.

*If the above requirements are met, credits will be awarded.

Kwansei Gakuin University
Intensive Japanese Language and Culture Study Program
-Japanese Culture Class-

◆授業目的

日本の社会・文化への理解を深める。

Course Purpose

Increase the level of understanding of Japanese society and culture.

◆到達目標

日本の社会・文化の特性を自分の言葉で説明できる。

Learning Goals

Students will be able to explain the characteristics of Japanese society and culture in their own words

◆授業内容

日本の伝統文化を 1～2 つとりあげ、それについて講義、調査、体験を行う。2022 年冬季のテーマは検討中である。

講義では教師がテーマに関する基礎的な情報を紹介する。調査では学生はスモールグループとなり、与えられたテーマの調査とクラスでの報告発表を行う。体験では、テーマに関連する専門職人に話を聞いたり現場や実物の映像を視聴したりし、実体験に近い感覚を味わう。最後には授業のまとめと個人のふりかえりを行ってレポートを作成し、学習した伝統文化の特性を自分の言葉で説明する。

Outline

One or two traditional Japanese culture topics will be covered through lectures. Students will do some research, and some hands-on experiences on the topics.

The theme for the winter of 2022 is TBA.

In the lecture, basic information about the theme will be introduced by the lecturer. Students will work in small groups to do research on the given theme and do the presentation in the class. During the hands-on experience sessions, students would have the opportunity to talk to the professionals, or the Masters related to the theme and virtually experience the sites and objects. At the end of the course, students will write a report in Japanese they have acquired. The report should cover the summary of the class, reflection on their individual experiences, and explain the characteristics of the traditional culture they have learned.

◆教材

ハンドアウトを配布する。

Course Materials

No required textbooks. Instructors will prepare handouts and materials.

◆成績

パフォーマンス課題 50%

レポート 50%

Grading Criteria

Performance Task 50%

Report 50%