

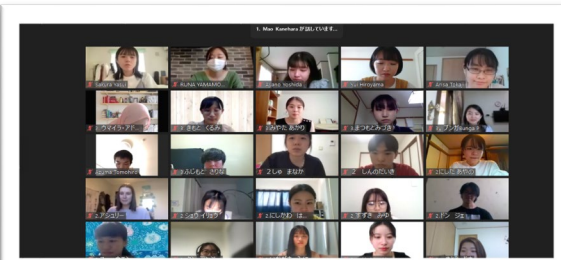


Intensive Japanese Language and Culture Study Program

Let's study Japanese this winter!!!

The Center for Japanese Language Education at Kwansei Gakuin University (KGU) will launch an online version of the "Intensive Japanese Language and Culture Study Program" this winter. This is a three-week program, offering two different levels for Japanese language classes, elementary and intermediate. All sessions will be delivered in live stream interactive format and to maximize the opportunities for participants to communicate with native Japanese speakers, KGU school volunteers will participate as "Nihongo Partner" in classes and work together to accomplish tasks and projects.

The program will not only focus on language studies. In addition to the regular language classes, students will also be able to participate in Japanese Culture study sessions.

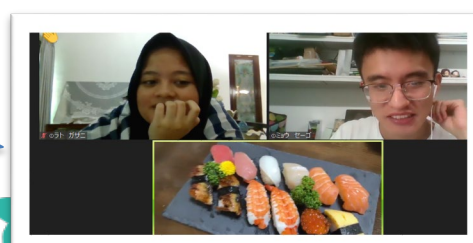


We are Nihongo Partners!!

We are not just here to support your Japanese studies. We enjoy making new friends and learning about people from around the world. We look forward to meeting you all and building friendships with you through this

Online Home Visit!!

We provide virtual homestay experience through Online Home Visit session. You may become one of the members of a Japanese family and enjoy conversation and cultural exchange with them!



Online!
Now open to
Exchange Students

Program Information

Program Dates & Time	Jan.31 - Feb. 18 2022 13:20-16:50 (JST)
Teaching Method	Synchronous online Zoom classes
Class Hours and Credits	Class Hours 100 min. × 28 classes* = 45h (2 KGU credits) *12 Japanese + 11 Sessions + 5 Japanese Culture classes
Program Fee	30,000 JPY *Payment method: Credit card (Mastercard or Visa card only)

Class Level

	Prerequisite skills and requirements (self-taught is also acceptable)	Learning Outcomes
Elementary	<ul style="list-style-type: none">Completed more than 150 hours of Japanese language studies.Students are expected to have knowledge of basic verb conjugation, such as Dictionary form, Nai- form, and Te-form.Students should be at a level equivalent to "Minna no Nihongo" Lessons L13-50 or "Genki" Lessons L6-21.)Students should be able to output in simple sentences with some complex sentences, or in learning process of doing so.	<ul style="list-style-type: none">Students will be able to use elementary expressions, and become proficient in everyday conversation.Students will also be able to describe and express their thoughts on familiar day-to-day topics.
Intermediate	<ul style="list-style-type: none">Completed more than 400 hours of Japanese language studiesStudents are expected to have finished studying elementary level textbooks, and have moved onto intermediate level materials or more advanced level.N4 or higher level as a requirement	<ul style="list-style-type: none">Students will be able to discuss abstract concepts, and present and express their opinions.Students will also gain knowledge on other people's opinions and by doing so deepen their understanding of the subject.

*The final decision on class placement will be based on a language placement test which will take place before the program starts. Therefore, students may be placed to the different class level from the one they have originally chosen, depending on their results.

Japanese Culture Class

The theme for the Winter of 2022 is ZEN. Students will work in groups to do research on the theme, participate in a hands-on experience session, and do the final presentaion.

Program Schedule

		Mon Jan 31	Tue Feb 1	Wed Feb 2	Thu Feb 3	Fri Feb 4	Sat Feb 5
WEEK 1	13:20-15:00	Orientation/ Placement Test (Japanese ①)	Japanese ②	Japanese Culture Class ①	Japanese ③	Japanese Culture Class ③	Japanese Culture Class ⑤
	15:10-16:50		Session with Nihongo Partner	Japanese Culture Class ②	Session with Nihongo Partner	Japanese Culture Class ④	-
		Feb 7	Feb 8	Feb 9	Feb 10	Feb 11	Feb 12
WEEK 2	13:20-15:00	Japanese ④	Japanese ⑤	-	Japanese ⑥	Japanese ⑦	-
	15:10-16:50	Session with Nihongo Partner	Session with Nihongo Partner	Japanese Culture Sharing	Session with Nihongo Partner	Session with Nihongo Partner	
		Feb 14	Feb 15	Feb 16	Feb 17	Feb 18	
WEEK 3	13:20-15:00	Japanese ⑧	Japanese ⑨	Japanese ⑩	Japanese ⑪	Japanese ⑫	-
	15:10-16:50	Session with Nihongo Partner	Session with Nihongo Partner	Session with Nihongo Partner	Session with Nihongo Partner	Session with Nihongo Partner/ Completion Ceremony	

* Schedule is subject to change.

Nomination, Application

Application Requirement	Students must be enrolled at one of KGU's partner institutions, or registered as exchange students or will be registered in 2022 Spring Semester.
Nomination Deadline	December 21 Through Home University
Application Deadline	January 11