

K W A N S E I
G A K U I N
U N I V E R S I T Y
S U M M E R
S C H O O L
2023



KGU SUMMER SCHOOL

The KGU Summer School is a joint program run by Kwansei Gakuin University (KGU) and our select partner institutions.

This 5 week program offers “East Asian Study” track - you can select courses that suit your interest, allowing you to study a variety of topics related to Japan and East Asia along with KGU students.

Courses in the East Asian Study track are taught by KGU faculty member and visiting lecturers from our partner institutions covering a wide range of topics such as politics, religions, international relations, business and economics to explore many different aspects of East Asia.

Students participating in this program will benefit greatly, not only from the academic values, but also from the cultural exchange experience.

Come and join us this summer, and be inspired by people you will meet from all over the world and create lasting memories at KGU!

Program Schedule

*All dates are subject to change.

June 11

Arrival Day

All participants must arrive in Japan on the specified date, and will stay at a hotel near Kansai International Airport on the night of their arrival. Hotel rooms will be arranged by KGU.

June 12

Going to KGU Orientation Day

A chartered bus will pick you up at the hotel and take you to KGU.

**Classes in
Session**

July 13

Check-out / Departure Day

A chartered bus will take you to Kansai International Airport.

late August

Transcripts Issued

Program Information

Program Dates	June 11 – July 13, 2023
Number of Participants	Maximum: 60 students
Application Requirement	Students must be enrolled at one of our partner institutions as an undergraduate or graduate student for the duration of the program.

Transcript/Credit Transfer

Upon completion of the program, transcripts will be issued and sent out at the end of August. Credit systems differ depending on the home university, and students are advised to consult with their home university regarding how KGU credits will be transferred.

Classes

Classes are held Monday through Friday*, with frequent activities and excursions. Each class is 100 minutes long and taught in lecture/seminar style.

* Some field trips may be on the weekends

Program Overview

Track	Course Title	Credits	Teaching Hours	Language of Instruction	Eligible Students
East Asian Study	Japanese Economy and Business	3	33h	English	All Students
	The Japanese Production System in Context	3	33h	English	Trinity and KGU
	International Relations of East Asia	3	33h	English	SMU, Stetson, KGU, and other non-faculty lead Students
	Contemporary Japanese and American Politics and Society	3	33h	English	
	Topics in Japanese Society	3	33h	English	Trinity and KGU
	Religions of China and Japan	3	33h	English	All Students
	Introduction to Asian Religions	3	33h	English	All Students

East Asian Study Track

All East Asian Study Track Courses are taught in English, offering a wide variety of topics related to contemporary Japan and East Asia. Students may choose one course from each group shown below. All courses are also open to KGU students.



Economy and Business

Japanese Economy and Business

▪ Credits: 3 credits ▪ Language of Instruction: English ▪ Offered by: Kwansei Gakuin University

The purpose of this course is to give students an overview of the Japanese Economy and Japanese Business. Starting with the development of the Japanese economy from 1945 until today, this seminar first gives an overview of the changes that occurred during that time, investigates to what extent the Japanese employment system has transformed and discusses recent developments in the Japanese labor market. In the second part of this course, students will learn about Japanese management by using real world case studies, which will help them to develop cross-cultural communication and management skills that are beneficial for their future careers.

The Japanese Production System in Context

▪ Credits: 3 credits ▪ Language of Instruction: English ▪ Offered by: Trinity University

We examine the evolution of production systems from the Middle Ages to present times, focusing on the Lean paradigm, or Toyota Production System (Toyota Seisan Hoshiki). We will learn the basics of production management and we will study, analyze, compare and contrast Lean with other older and newer systems and explore the social, cultural and philosophical context that makes Lean the current benchmark in production quality and efficiency. As part of the coursework, students will research some aspect of Lean and produce a research report and presentation.

Politics & International Relations

International Relations of East Asia

▪ Credits: 3 credits ▪ Language of Instruction: English ▪ Offered by: Southern Methodist University

This course provides an overview of international relations in the East Asian region while introducing students to the leading theories and debates about regional cooperation in the field of international relations. It examines the various tensions between the establishment of closer ties among the nations in East Asia and the preservation of national sovereignty. The central question is whether the East Asian region is heading towards greater peace and cooperation or war and conflict in the twenty-first century. For the purpose of this course, East Asia is defined as the region encompassing the Russian Far East, China, Korea, Japan, Taiwan, and Southeast Asia. Because it has been extensively involved in the region since the 1850s, we also discuss the role of the United States in the region. We may make occasional reference to India, but South Asia and Central Asia are not a primary focus of this course.

Contemporary Japanese and American Politics and Society

▪ Credits: 3 credits ▪ Language of Instruction: English ▪ Offered by: Southern Methodist University

This course offers a general introduction to the major historical, political, and social trends of contemporary Japan that affect the future of Japan, East Asia, and the world including the United States. Unlike the courses that merely focus on economic development, political institutions, and elite politics, this course focuses on popular attitudes and culture, political participation, and the government's response in the globalized world.

Culture and Society

Topics in Japanese Society

▪ Credits: 3 credits ▪ Language of Instruction: English ▪ Offered by: Trinity University

This course will provide you with an in depth understanding of the historical, political, and social forces that have shaped modern Japan. We will develop critical analytic skills while interrogating various widely-held Western claims about Japan, "Japanese-ness," and "culture" generally contextualizing these claims within the historical, social, and geopolitical regimes that gave rise to them.

Religions of China and Japan

▪ Credits: 3 credits ▪ Language of Instruction: English ▪ Offered by: Stetson University

This course is an introduction to the significant religious traditions found within China and Japan. These traditions include Tibetan Buddhism and Bön, Chinese Buddhism, Daoism, and Confucianism, as well as Japanese Buddhism and Shinto. We will explore the origins and evolution of these religions through a combination of lectures, readings, discussions, films, and individual field research. We will also examine the intersections of these beliefs within each cultural milieu and learn about the lived experience of religious members in the modern world. This course will give particular attention to the philosophical, biographical, ritual, and doctrinal texts of these religious traditions in order to engage with them more directly.

Introduction to Asian Religions

▪ Credits: 3 credits ▪ Language of Instruction: English ▪ Offered by: Stetson University

This course serves as a general introduction to Asian Religions, in particular Indian Hinduism and Buddhism; Tibetan Bön and Buddhism; Chinese Confucianism, Daoism, and Buddhism; and Japanese Buddhism and Shinto. By emphasizing the reading of primary texts in translation we will explore the major ideas and practices of these traditions, taking special note of the cultural, historical, political, and material contexts in which they were conceived and developed.

Fieldwork and Extracurricular Activities

Fieldwork Activities

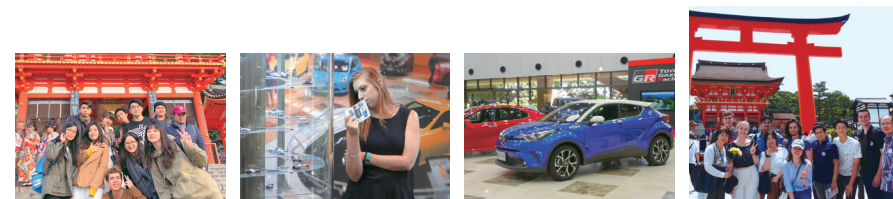
Fieldwork activities will provide valuable learning opportunities for everyone. By participating in the fieldwork, you can apply the knowledge and skills acquired in the classroom and increase a better understanding of your study subject. Enjoy the fieldwork activities filled with old and new elements of Japanese culture!

Students will visit one of the world's largest automobile manufacturers, Toyota - you will see the Toyota plant and learn about their latest technology, production system and business strategy.

You will also visit the Toyota Commemorative Museum of Industry & Technology. Since Toyota originally began as a textile company, this museum features textile machines and automobiles, both of which played an important part in the Japanese industry. You will be able to observe how technologies have developed through history from dynamic displays and actual demonstrations.

You will also have an opportunity to visit Kyoto. Enjoy the peaceful atmosphere in Japanese gardens, visiting temples and shrines, and trying out traditional cuisine - gaining valuable insights into a variety of concepts in traditional Japanese aesthetics.

*The destination may change depending on availability.



Application

Program Fees Total: **400,000** JPY*

* The tuition is 174,600 JPY, which will be waived for students who will be coming on an exchange basis. The home institutions and KGU must have a written agreement on whether or not to accept students on an exchange basis prior to acceptance to the program.

Included in program fees	NOT included in program fees
<ul style="list-style-type: none"> All classes and extracurricular activities offered throughout the program Accommodation for the duration of the program KGU designated hotel on Arrival Day (one night) Chartered bus from the hotel to KGU Chartered bus from KGU to Kansai International Airport (Departure Day) Liability Insurance, Fire Insurance 	<ul style="list-style-type: none"> Airfare Commute between KGU and the participant's accommodation Overseas Travel Insurance You are required to be covered by travel insurance that protects you against the cost of potential problems such as flight cancellation, lost luggage, stolen property, and illness and injury, for the duration of the program. Any other costs that are not listed in the "Included in program fees" section.



Cultural Activities

You have a chance to participate in various types of Japanese Cultural Activities, such as Wadaiko (Japanese traditional drums), Yuzen-zome (Yuzen dyeing), watching a baseball match or Takarazuka Review Viewing. Participating in these inspiring cultural activities will give you a great experience to connect more deeply with Japanese culture.

*Activities are subject to change.



How to apply

Applications can be completed online, and are available from one month prior to the deadline. However, you must apply through the study abroad office at your home university. Once we receive your nomination from your university, further information regarding application procedures will be provided along with the application form URL. Please check the latest information regarding the application procedure from the URL below.

 <https://ciec.kwansei.ac.jp/study/shortprograms/summerschool/>



Application Schedule

Nomination Deadline
early-March

➔

Application Deadline
March 22

➔

Admission Results
early-April

Housing and Expenses

Accommodation Options

We offer two accommodation options, homestays and International Dormitory. You can indicate your preferred choice at the time of application.*

*There are a limited number of rooms/placements in each type of accommodation. Please note that we are not always able to guarantee a place in your choice of accommodation.



Homestays

All host families are registered directly with KGU. Staying with a Japanese family is a very effective way to improve your Japanese language skills and gives you a great opportunity to experience the Japanese lifestyle.



International Dormitory

Located within a 10 minute walk from the Nishinomiya Uegahara Campus, the dormitory is self-catering with shared facilities, such as kitchen, bathroom, laundry, and lounge. A Wi-Fi network is also available.



Living Expenses

The cost of living can vary depending on where you stay, your lifestyle and budget. On-campus cafeterias and convenience stores provide affordable meal options. There are some local grocery stores near the campus, so preparing meals is very easy for those who stay at the KGU International Dormitory. These are estimated costs of living in the local area, to give you a rough idea of how much you will need during the program.

* Homestay option provides 2 meals on weekdays, 3 on weekends.

* The KGU Training Center is a university gym open to all students and staff. This registration fee applies to those who wish to use the gym during the program.

* Students are advised to bring around 70,000 JPY in cash for emergency situations or when credit cards are not accepted.

Food (3 times a day) *	Approx. 1,500 JPY~ 1DAY
Transportation cost from accommodation to KGU*	Approx. 550 JPY (for return journey) 1DAY
KGU Training Center*	2,000 JPY (for the duration of the program)
Miscellaneous* (toiletries, hobbies and outings, emergency money, etc.)	Approx. 80,000 JPY~