



KWANSEI **G**AKUIN
UNIVERSITY
WINTER SCHOOL 2023

Welcome to KGU!!



The Center for International Education and Collaboration at Kwansei Gakuin University (KGU) welcomes students from our partner universities to join the KGU Japan Studies Program. This three-week program is designed for students who wish to study about “Cool Japan”, which includes contemporary Japanese culture and products such as animation, manga, games, Japanese traditional cuisines and commodities. Through lessons taught entirely in English, you will learn about Japan’s cultural and creative industries that shape “Cool Japan” from a business studies and social sciences perspective, while classes on Japanese culture will examine the roots of Japan’s popularity branded as “Cool Japan”.

In addition to the regular classes, students in this program will deepen their understanding of Japan during field trips to Japan’s cultural industries and historically rich places like Kyoto and Osaka. Students also have the chance to participate in various types of Japanese cultural activities, such as Yuzen dyeing and making Japanese traditional sweets. Participation in this program does not require any Japanese language skills, so this is a great opportunity to explore “Cool Japan” and add a global experience to your studies. Come and join us on our historic campus located between the vibrant city of Osaka and the beautiful harbor city of Kobe, and meet and study with friends from all over the world!


Program Information

Program Dates	January 30 – February 17, 2023
Number of Participants	Maximum: 28 students
Application Requirement	Students must be enrolled at one of our partner institutions as an undergraduate or graduate student for the duration of the program.
Number of Courses / Credits	2 courses = 4 KGU credits
Study hours / Teaching hours	Approx. 150 study hours in total <Actual teaching hours= 50h (100 min.+ x 30 classes)> Each class is 100 minutes long and taught in lecture/seminar style.
Language of Instruction	English

Transcript/Credit Transfer

Upon completion of the program, transcripts will be issued and sent out at the mid-March. Credit systems differ depending on the home university, and students are advised to consult with their home university regarding how KGU credits will be transferred.

Program Schedule

Jan 29	Arrival Day All participants are requested to arrive in Japan on the specified date, and will stay at a hotel near Kansai International Airport for the night of their arrival. Alternatively, you may come to the hotel on the arrival day. Hotel rooms will be arranged by KGU.
Jan 30	Going to KGU A chartered bus will pick you up at the hotel and take you to KGU. Orientation Class starts 
Feb 17	Class ends Completion Ceremony
Feb 18	Check-out/Departure Day A chartered bus will take you to Kansai International Airport.
mid-March	Transcripts issued

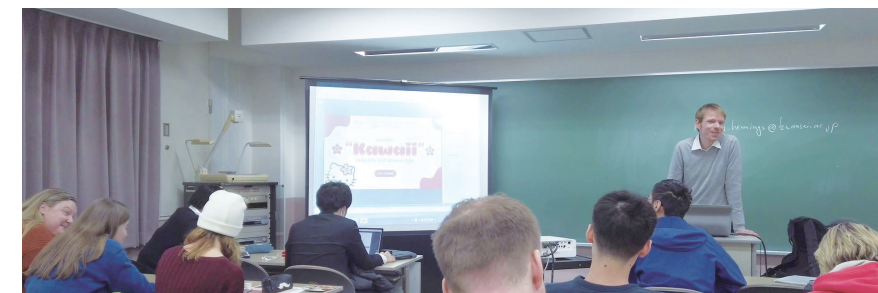
Course Information

Japan Studies Seminar B (Cool Japan: Cultural and Creative Industries)

In this interdisciplinary course, students will learn about various forms of "Cool Japan" by reading and discussing case studies from Japan’s cultural and creative industries. Students will also learn about the challenges this industry has to face that come with competing in a globalized and fast-changing world. Beginning with an introduction of the Japanese government’s "Cool Japan" strategy, the case studies of this course will cover topics such as Japanese pop music and idols, the anime industry, and the traditional sake and tea businesses.

Japan Studies Seminar D (Cool Japan: Pop Culture)

The purpose of this course is for students to become acquainted and/ or deepen their existing knowledge of anime and manga and how they conform one of the most important cores of pop culture, both in Japan and abroad. Students will learn about the history and characteristics of anime and manga and their inherent transmedia qualities together with how they shape or are shaped by other fields such as games, live action films, television dramas or even kabuki and advertising.





Fieldwork and Cultural Activities

Fieldwork activities will provide valuable learning opportunities for everyone. You will visit the best places in the Kansai region such as Kyoto, Japan's old capital, full of historic treasures with many temples and shrines, where you may visit one of the finest tea companies and experience a Japanese traditional tea, and Takarazuka, home of Tezuka Osamu Manga Museum where you may discover the roots of Japanese pop culture and Cool Japan. By participating in the fieldwork, you can apply the knowledge and skills acquired in the classroom and get a better understanding of your study subject. You also have a chance to participate in Japanese Cultural Activities, such as Yuzen-zome (Yuzen dyeing) and Wadaiko (Japanese traditional drums). Participating in these inspiring cultural activities will give you a great experience to connect more deeply with Japanese culture.

*The destination of fieldwork and cultural activities may change depending on availability.



Accommodation Options

We offer three accommodation options, International Dormitory, Global House Nishinomiya-kitaguchi, and homestays. You may indicate your preferred choice at the time of application.*

*There are a limited number of rooms/placements in each type of accommodation. Please note that we are not always able to guarantee a place in your choice of accommodation.

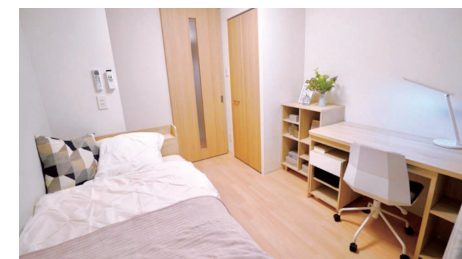
International Dormitory

The dormitory is self-catering with shared facilities, such as kitchen, bath room/toilets, laundry, and lounge. A Wi-Fi network is also available. Rooms are separated by gender, and sharing time and living together under the same roof, you get to make friends with people from all over the world!



Homestays

All host families are registered directly with KGU. Staying with a Japanese family is a very effective way to improve your Japanese language skills and also gives you a great opportunity to experience the Japanese lifestyle.



Global House Nishinomiya-kitaguchi for Women

Life at Global House is designed to ensure that each individual's privacy is protected while a home-like atmosphere is maintained for students' safe and comfortable lives. Facilities include Wi-Fi, a large bathroom, private shower rooms, and laundry. The common space, where meals are served in the morning and evening, is also a place where dorm residents can get to know each other and make friends. "The dormitory managers" are always on hand to support students in their daily lives.

Living Expenses

The cost of living can vary depending on where you stay, your lifestyle and budget. On-campus cafeterias and convenience stores provide affordable meal options. There are some local grocery stores near the International Dormitory, so preparing meals is very easy for those who stay at the dormitory. These are estimated costs of living in the local area, to give you a rough idea of how much you will need during the program.

Food (3 times a day) *	Approx. 1,500 JPY~ (1DAY)
Transportation cost from accommodation to KGU	Approx. 440 JPY~ (1DAY) (for return journey)
Miscellaneous* (toiletries, hobbies and outings, emergency money, etc.)	Approx. 50,000 JPY~

*Homestay option provides 2 meals on weekdays, 3 on weekends. Global House provides 2 meals a day

*Students are advised to bring around 50,000 JPY in cash for emergency situations or when credit cards are not accepted.

Program Fees


Total: 270,000 JPY
Students with a tuition waiver
Total: 180,000 JPY*

*The tuition is 90,000 JPY, which will be waived for students who will be coming on an exchange basis. The home institutions and KGU must have a written agreement on whether or not to accept students on an exchange basis prior to acceptance to the program.

Included in program fees	NOT included in program fees
<ul style="list-style-type: none">• All classes and Cultural Activities and Fieldtrips offered throughout the program• Accommodation for the duration of the program• Accommodation on Arrival Day (one night)• Chartered bus from the hotel to KGU (Orientation Day)• Chartered bus from KGU to Kansai International Airport (Departure Day)• Liability Insurance, Fire Insurance	<ul style="list-style-type: none">• Airfare• Commute between KGU and the participant's accommodation• Overseas Travel Insurance You are required to be covered by a travel insurance that protects you against the cost of potential problems such as flight cancellation, lost luggage, stolen property, and illness and injury, for the duration of the program.• Any other costs that are not listed in the "Included in program fees" section.

Application Procedures

Applications can be completed online, and are available from one month prior to the deadline. However, you must apply through the study abroad office at your home university. Once we receive your information from your university, further information regarding application procedures will be provided along with the application form URL.

Application Schedule

Application Deadline
October 31

Admission Result
Mid-November

About KGU




Mastery for Service

"Mastery for Service", Kwansei Gakuin's school motto, reflects the ideal for all its members to master their abundant God-given gifts to serve their neighbors, society and the world.



Location



KGU is located in Nishinomiya city, roughly halfway between the two cities of Osaka and Kobe (a one-way trip to either city takes about 30 minutes by train) . Students can enjoy this convenience while also taking in the beautiful natural surroundings of the Nishinomiya Uegahara campus.

Kwansei Gakuin University at a Glance

*As of May 2022



Kwansei Gakuin University is an independent institution for higher education, offering Bachelor's, Master's, and Ph.D. degrees in over 80 different disciplines to a student body of approximately 25,000. Founded in 1889, the university maintains academic standards that rank among the highest of all Japanese universities and colleges. KGU places a large emphasis on producing 'global citizens'; and in 2014 was selected by the Japanese government as one of 37 universities nationwide to receive funding under the Top Global University Project.